

Next Steps

Board of Directors

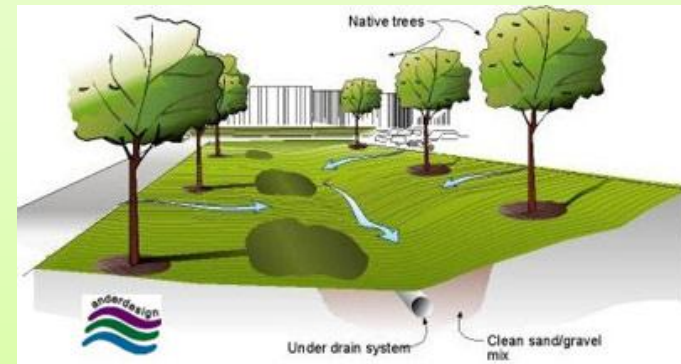
Convene Board of Directors:

- Adopt by-laws
- Elect officers
- Locate funding to continue coordinator position
- Review and adopt Plan of Work
- Oversee activities of working groups



Watershed Plan Implementations

- Identify potential implementations from Plan of Work
- Identify funding to pursue implementations
- Plan, design and conduct implementations

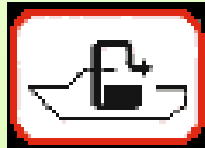


Continue to Support Existing Programs

- Landscaping for Water Quality
- CT DEEP Clean Marina/Clean Vessel Programs
- Save-the-River/Save-the-Hills Boat Pumpout



Program



- Teacher Water Quality Loan Kit



Continue Development of New Programs

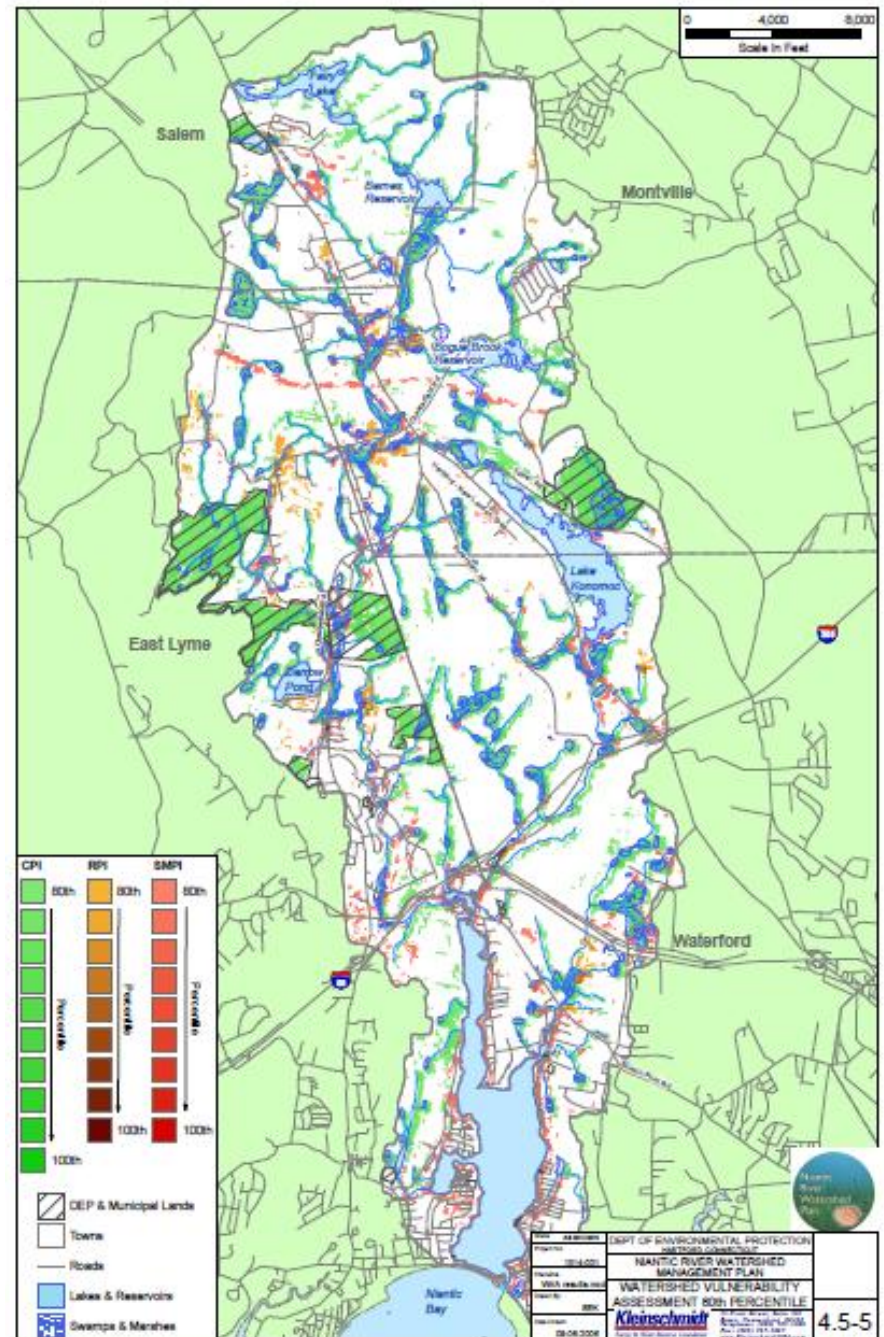
- Volunteer Water Quality Monitoring Program
- Incorporate NRWPP Watershed Vulnerability Study into Land-use Decision Making

Watershed Vulnerability Priority Indices

- Conservation Priority Index (CPI) - Areas ideal for protection against future water quality degradation (generally highlights areas such as riparian corridors and forests).
- Restoration Priority Index (RPI) - Areas prone to erosion or increased agricultural impacts.
- Stormwater Management Priority Index (SMPI) - Urbanized areas, including transportation corridors.

Watershed Vulnerability Study

- CPI - Conservation Priority Index
- RPI - Restoration Priority Index
- SMPI - Stormwater Management Priority Index



Partnerships

Continue to build and strengthen partnerships with other organizations to improve our ability to leverage resources to conduct effective programs and Watershed Plan implementations.



Other Ideas???

Please raise your hand or pass forward your index card.

Thank you for coming!!!



Niantic River
Watershed Plan

... a treasure worth protecting