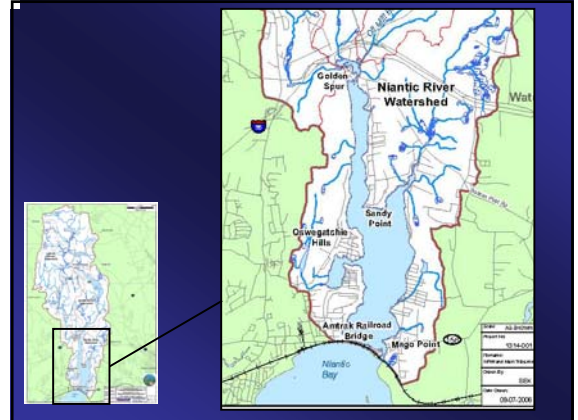




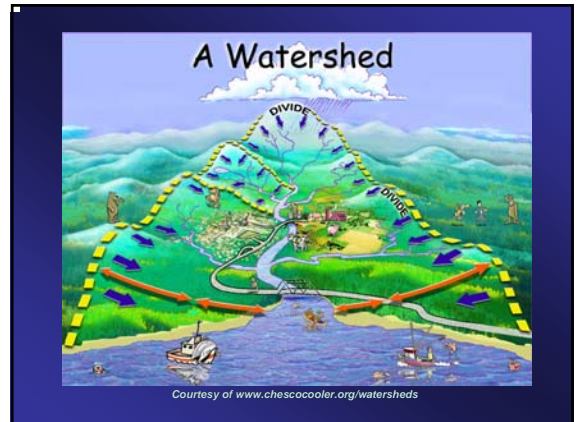
## The Niantic River Watershed

Presented by: Sarah Lamagna



## What is a Watershed?

A watershed consists of all land that drains to a body of water; in this case, it is the Niantic River.



Courtesy of [www.chescocooler.org/watersheds](http://www.chescocooler.org/watersheds)

## What does the Niantic River Watershed include?

### Local water features

- Fairy Lake
- Horse Pond
- Barnes Reservoir
- Lake Konomac
- Darrow Pond
- Latimer Brook
- Oil Mill Brook
- Stony Brook
- Cranberry Brook
- Bogue Brook Reservoir
- Also the Niantic River itself

The watershed covers 31.3 square miles (20,000 acres) over four towns: East Lyme, Waterford, Salem and Montville.

## What is the Problem?



- The Niantic River does not currently meet state water quality standards because of observed degradation of aquatic life.
- Nitrogen and bacteria are the two greatest water quality concerns for the Niantic River.

*What has happened?*

Beginning in the 1980s, there was a sharp decline in eelgrass and in subsequent years eelgrass populations have shown annual variation.



Photo courtesy of <http://www.buzzardsbay.org/eelgrass/eelgrass-uncatena.jpg>

Scallops and winter flounder, which rely on eelgrass as nursery habitat, are practically missing from the Niantic River.

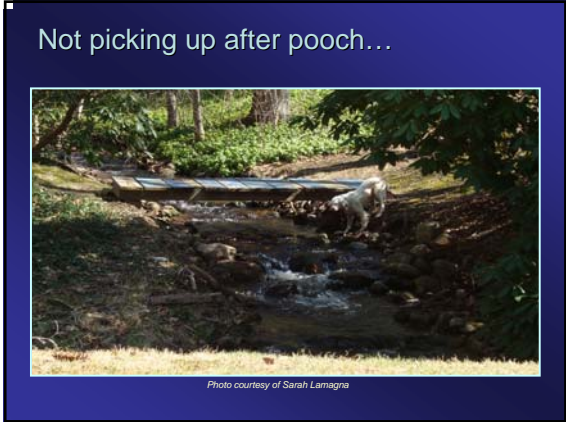
New species like green crabs and grubby, which are more tolerant of polluted waters, appear to be on the rise in the river.

*How do we impact our Watershed?*

Polluted runoff accounts for approximately half of the nitrogen inputs into the Niantic River



Photo courtesy of Sarah Lemagna



*How can we help protect our Watershed?*

- Native plants
- Rain barrels
- Rain gardens
- Increasing pervious surfaces



Photo courtesy of Pat Young



Photo courtesy of Pat Young



Photo courtesy of Sarah Lamagna

- Mulch
- Soil testing
- Vegetative buffers



Photo courtesy of Sarah Lamagna

- Clean up pet waste
- Compost

